

Planning Committee Meeting

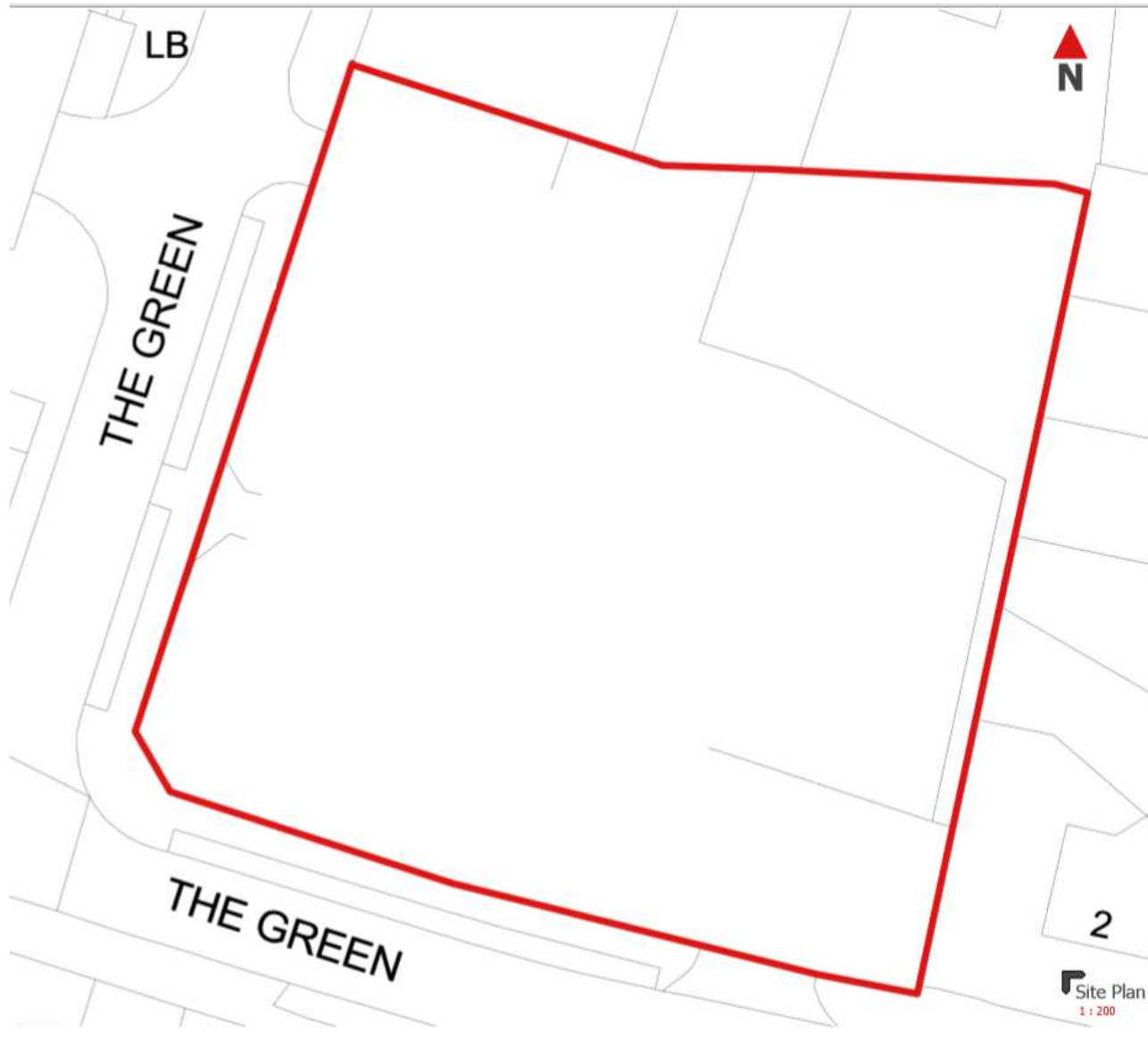
8 July 2020

PA/344182/19: Erection of a mixed use block comprising of fourteen one bed flats (Class C3) and retail (Class A1), together with access and landscaping on the site of the former Fytton Arms Inn.

4 The Green, Oldham, OL8 2LT



Site Location Plan



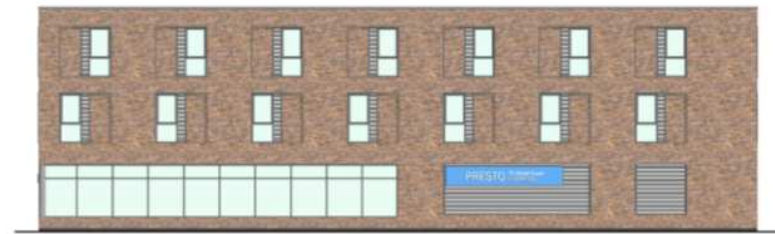
Proposed layout



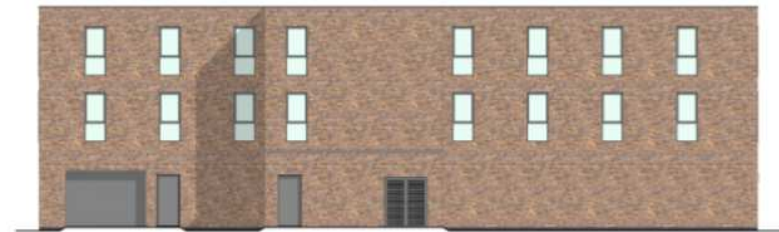
Proposed principal elevations



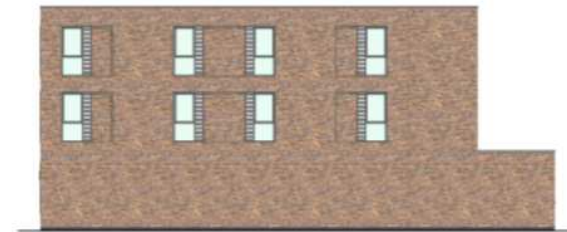
Left Elevation
1:100



Front Elevation
1:100



Rear Elevation
1:100



Right Elevation
1:100

Photomontage from the west



Aerial view from the south



Looking east along The Green (site behind wall)



Panning left from previous



Residential types opposite the site



Site Location Plan

